

# Trouble

SEPTEMBER 2010

FREE

SHOP

EAT  
MILK

Australia  
1788-1988

THE BIG  
SHINE  
EASY DRINKING

OZ  
FACT  
of the  
WEEK

ART HEROES

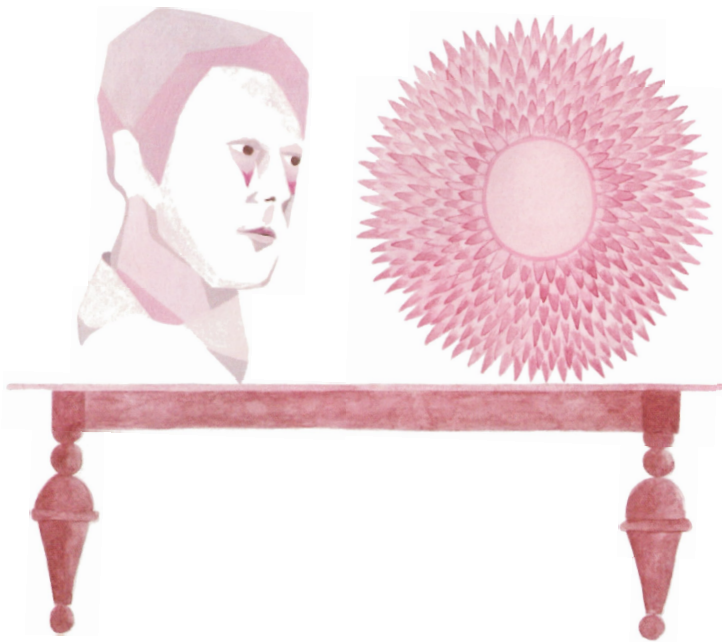
WARNING: MAY CONTAIN COARSE LANGUAGE & ADULT THEMES

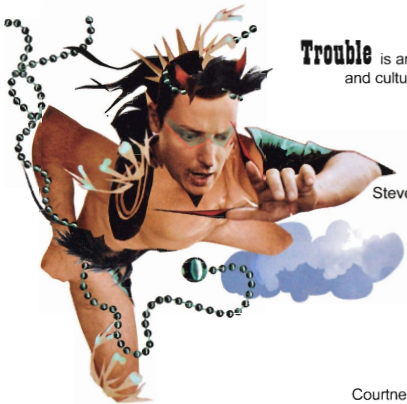




**PREVIOUS SPREAD: 3.** Kim DEMUTH, *Camino Dia* 27 2010, mixed media, 90 x 70 x 5cm. *Camino: Collective Works form the Pilgrim's Way*, Beam Contemporary, Level One, 30 Guildford Lane, Melbourne (VIC), 9 September – 2 October. **4.** Dianne EMERY, *Pitcher Plant* 2010, watercolour on paper. *Exquisite Connections, the secret life of plants*, Woodbine Art, 2644 Daylesford Road Malmesbury (VIC), 5 September – 3 October.

**5.** Petra NEVISTIC, *Two heads one thought* 2010, watercolour and gouache on paper, 21 x 30 cm 2010. *Garden Arrangements*, Space 22, 22 Main Road Ballarat (VIC), 23 September – 10 October. **6.** Allison BUTLER as Portable 2 in *Expose Yourself Globally*, which explores the desperate art of getting noticed in an irreverent musical stand-up romp. The Butterfly Club, 204 Bank Street, South Melbourne (VIC), 1 – 9 October 2010. Part of the Melbourne Fringe Festival, 22 September – 10 October 2010. Bookings: Festival Tix: 03 9660 9666 or [www.melbournefringe.com.au](http://www.melbournefringe.com.au)





**Trouble** is an independent monthly mag for promotion of arts and culture, distributing to over 1,200 locations Nationally. Classified listings are \$4.40 per line (incl gst).

Administration  
Vanessa Boyack | admin@introuble.com.au

Editorial Enquiries  
Steve & Melissa Proposch | art@introuble.com.au  
0428 349 382

Advertising Sales  
Melanie Nightingale | mel@introuble.com.au  
0418 136 461

Listings  
Robert Pollard | listings@introuble.com.au

Contributors  
Hanna Mancini, Nicolas Low, Mandy Ord,  
Courtney Symes, Ryan Ford, Ricky French, Stevie Poor,  
Matt Emery, Kim Kneipp, Patrick Jones, Ive Sorocuk

Published by Newstead Press Pty Ltd  
PO Box 177 NEWSTEAD 3462  
www.introuble.com.au  
61 3 5476 2777

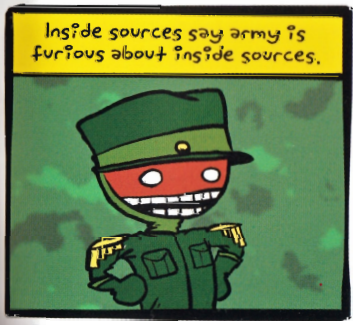
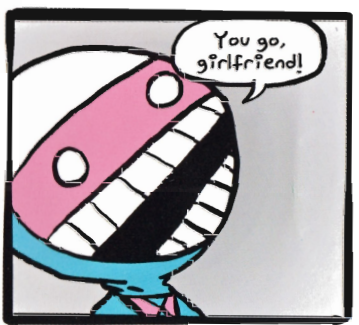
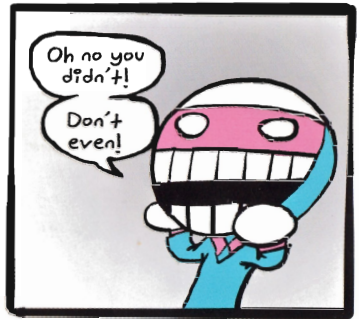
ISSN 1449-3926  
ABN 46 138 023 524



COVER: Eamo DONNELLY, *Eamo's Milkbar* 2008, ink and brush, digital colour. *Health Food Of A Nation*, Lamington Drive, 15 - 25 Keele Street Collingwood (VIC). 3 September - 2 October 2010. For more info - [www.lamingtondrive.com](http://www.lamingtondrive.com) - <http://jackywinter.com/>

DIS IS DE DISCLAIMER! The views and opinions expressed herein are not necessarily those of the publisher. To the best of our knowledge all details in this magazine were correct at the time of publication. The publisher does not accept responsibility for errors or omissions. All content in this publication is copyright and may not be reproduced in whole or in part in any form without prior permission of the publisher. Trouble is distributed from the first of every month of publication but accepts no responsibility for any inconvenience or financial loss in the event of delays. Phew!

# SASSY WAR TIME HOT GOSS



[IVE.SOROCUK@GMAIL.COM](mailto:IVE.SOROCUK@GMAIL.COM)