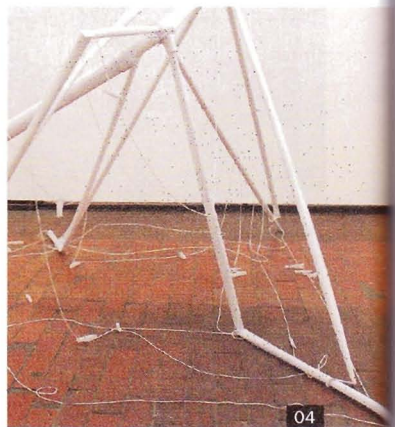
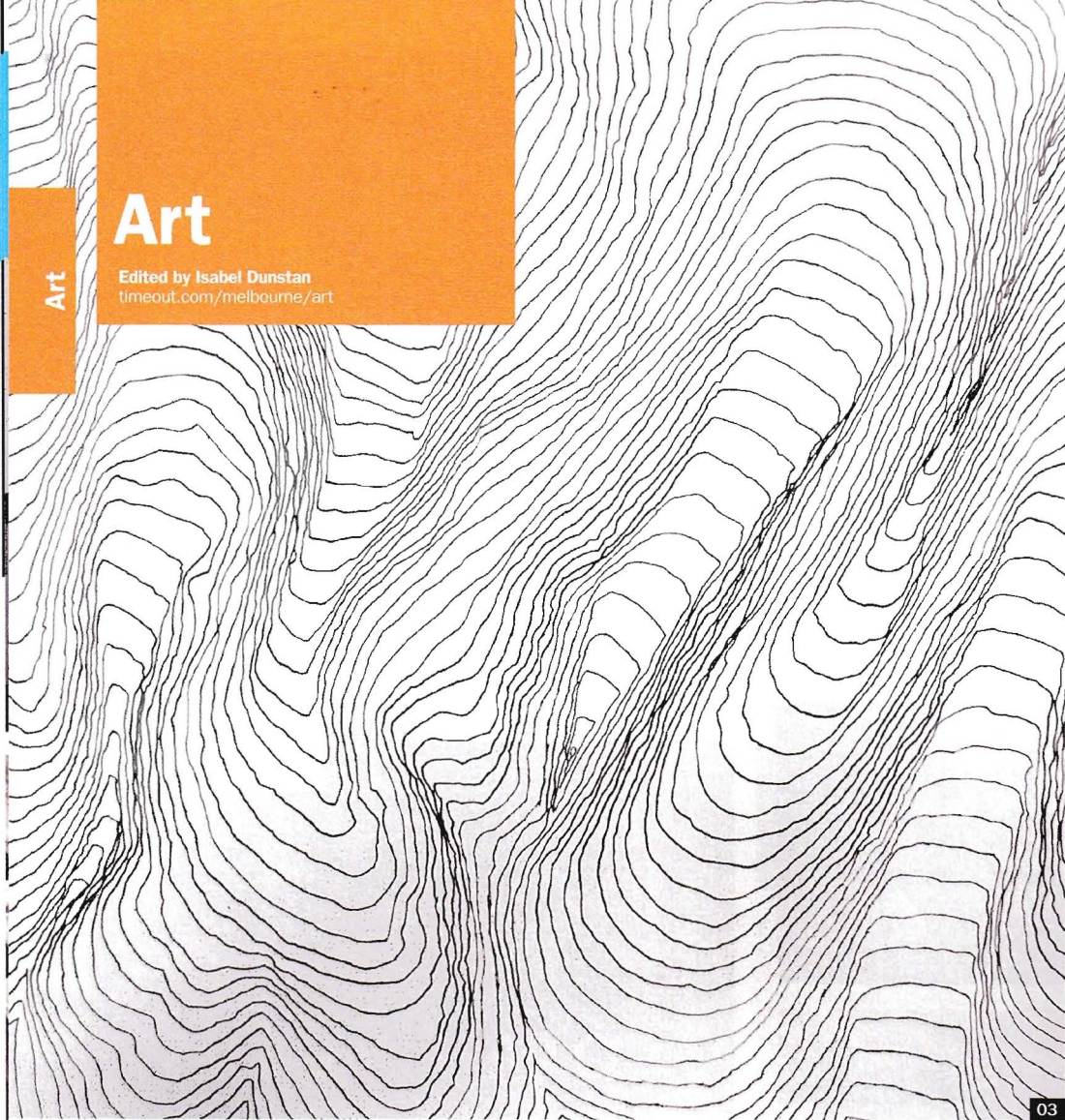


Art

Edited by Isabel Dunstan
timeout.com/melbourne/art



Top five events to see at Nite Art

Light up your winter's night with one hell of an art bender on Wednesday July 24.

By Isabel Dunstan

Nite Art asks galleries throughout the CBD to fling open their doors for one special Wednesday night in July. More than 30 city galleries are hosting Q&As with artists, panel discussions for first-time art collectors and special exhibitions. Founding partner Deborah Stahle (also a founder of Artwalk Melbourne) says the galleries are participating because they all "recognise that the art world is evolving and that there is an opportunity for bold new initiatives for the presentation and promotion of art." Here are *Time Out's* recommendations.

01 Q&A at West Space

Is the gallery space dead? How else can we connect people with art outside the gallery walls? These questions will be unpacked at Nite Art's Q&A at West Space. Panelists include influential thinkers from Melbourne's art world including NGV trustee and collector Corbett Lyon, *Vault* publisher Simon Hayman and gallery director Vasili Kaliman. "This will be a global conversation capturing imaginations, and

one where everyone has an opinion," Stahle says. *Lvl 1, 225 Bourke St, Melbourne 3000. 6-7.15pm. Free.*

02 Beam Contemporary

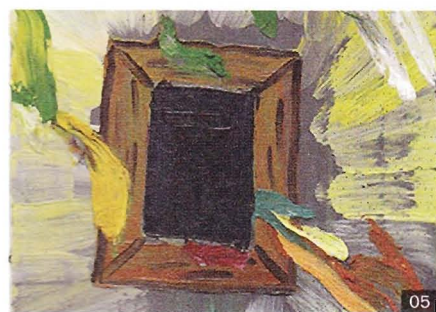
Second stop: Beam Contemporary, a gallery that prides itself on shining a light on independent artists. The exhibition *Framing Phantasm* features the work of Lucy Griggs who'll present her small-scaled, exquisitely detailed watercolour works, and installation artist Aimee Fairman with her terrarium-like sculptures. *Lvl 1, 30 Guildford Ln, Melbourne 3000. 6-11pm. Free.*

03 Daine Singer

Internationally recognised architect Peter Davidson designed Federation Square, but since suffering a stroke in 2010 has focused on artistic pursuits. Commercial gallery Daine Singer is exhibiting 30 years' worth of Davidson's archives alongside his poetry and sketchbooks. *Basement, 325 Flinders Ln, Melbourne 3000. 6-10pm. Free.*

04 Blindside

Blindside is hosting two exhibitions for Nite Art. Llawella Lewis's 'Quiltwood', a sculpture



depicting suburban rooftops, is made entirely from architectural tracing paper and polyester thread. Eliza Jane Gilchrist's *Skin and Bones* gives new life to discarded clothing. *Lvl 7, Room 14, Nicholas Building, 37 Swanston St, Melbourne 3000. 6-10pm. Free.*

05 Neon Parc

Getting tired? Perk up with Neon Parc's exhibition showing works by Melbourne painter Josey Kidd Crowe. A finalist in the Royal Bank of Scotland's Emerging Art Award 2011, Kidd Crowe creates lush paintings of bright colours and thick brush strokes. Kidd Crowe is one to watch. *53 Bourke St, Melbourne 3000. 03 9663 0911. 6-10pm. Free.*

Nite Art Around Melbourne 3000. niteart.com.au. 6pm-11pm. Free. Wed Jul 24.