

Clare Rae

Testing

beam contemporary

7- 30 October, 2010

Clare Rae's photographic practice explores representation within a feminist framework, focusing on gesture, theories of embodied subjectivity, and the artist's body as a site for performativity. *Testing* investigates the spatial and symbolic relationship between the artists' body and the domestic environment, further developing the exploration begun in Rae's previous work, *Climbing the Walls and Other Actions* (2009).

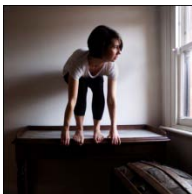
List of Works



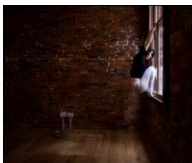
Untitled #1, 2010
Archival pigment print, 50 x 60 cm
Edition of 5 + 2AP



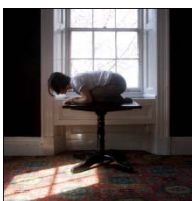
Untitled #2, 2010
Archival pigment print, 50 x 60 cm
Edition of 5 + 2AP



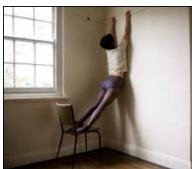
Untitled #3, 2010
Archival pigment print, 50 x 50 cm
Edition of 5 + 2AP



Untitled #4, 2010
Archival pigment print, 60 x 72 cm
Edition of 5 + 2AP



Untitled #5, 2010
Archival pigment print, 50 x 50 cm
Edition of 5 + 2AP



Untitled #6, 2010
Archival pigment print, 50 x 60 cm
Edition of 5 + 2AP



level 1, 30 guildford lane melbourne victoria 3000 australia
wednesday to saturday 12 – 6

info@beamcontemporary.com.au | www.beamcontemporary.com.au | +61 3 9670 4443