

Kevin Chin | Aimee Fairman | Lucy Griggs

Curated by Simone Hine

Left to Right



Aimee Fairman
Lithocardite I: Now cry the stars when upon the earth, their gaze might rest a nostalgic burst, 2013,

Acrylic on polyurethane resin, epoxy resin, velvet flocking, glitter and glass dome, 24.5cm x 20cm x 20cm



Aimee Fairman
Lithocardite II: Universe of milk and ember, 2013

Prosthetics silicone, epoxy resin and glass dome, 24.5cm x 19cm x 19.5cm



Aimee Fairman
Lithocardite III: ...and she herself, a cave full of echoes, 2013

Acrylic and prosthetics silicone on polyurethane, resin, epoxy resin and LED lights, 46.5cm x 28cm x 31cm



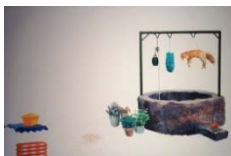
Aimee Fairman
Lithocardite IV: You watched the sky with kaleidoscopic eyes, 2013

Acrylic on polyurethane resin, epoxy resin, synthetic turf, and glass dome, 24.5 x 20cm x 23cm



Aimee Fairman
Lithocardite V: ...as twilight trembled under foot, 2013,

Acrylic on polyurethane resin, epoxy resin, glitter, and glass dome, 24.5 x 20.5cm x 21cm



Kevin Chin
Little Pieces (Fox), 2009

Oil on Canvas, 61cm x 91cm



Kevin Chin
Little Pieces (Orange Wagon), 2009

Oil on canvas, 67cm x 84cm



Kevin Chin
Little Pieces (Bricks), 2009

Oil on canvas, 61cm x 71cm



Kevin Chin
Wild, 2013

Oil on canvas, 142cm x 162 cm



Lucy Griggs
Reckoning Time 1, 2013

Watercolour on paper, 29.7cm x 41.9cm



Lucy Griggs
Reckoning Time 2, 2013

Watercolour on paper, 29.7cm x 41.9cm



Lucy Griggs,
Reckoning Time 3, 2013

Watercolour on paper, 29.7cm x 41.9cm

For prices and availability, please contact the gallery:
info@beamcontemporary.com.au

Kevin Chin's artworks are courtesy the artist and dianne tanzer gallery + projects

Lucy Griggs' artworks are courtesy the artist and Milani Gallery



level 1, 30 guildford lane melbourne victoria 3000 australia
wednesday to saturday 12 – 6

info@beamcontemporary.com.au | www.beamcontemporary.com.au | +61 3 9670 4443

Framing Phantasm presents the work of three artists that evoke the indefinable quality of a half-remembered dream or distant memory. Across painting and sculpture, these works offer moments of detail that are isolated from ordinary flows. They invite the viewer to embellish the worlds that they create, beyond the indicators that lie within their frames.

Lucy Griggs has exhibited widely for over a decade, with solo exhibitions at Miliani Gallery (2013, 2011), MARS (2010, 2008), Metro Arts (2008, 2003) and Seventh (2007). She has also exhibited in group exhibitions at QUT Art Museum (2012) and George Paton Gallery (2007). Lucy graduated with a Masters of Visual Art from VCA in 2007. Her works have been collected by the City of Melbourne and the National Gallery of Australia. Lucy is represented by Milani Gallery, Brisbane.

Kevin Chin has exhibited his works in solo exhibitions at Westspace, (2010), Linden Contemporary Art Space (2009) and Kings ARI (2009). His work has been included in group exhibitions at Paradise Hills (2011) and the Margret Lawrence Gallery (2012). Kevin graduated from VCA with First Class Honours in 2012.

Kevin is represented by Dianne tanzer gallery + projects, Melbourne.

Aimee Fairman has exhibited both nationally and internationally, including Kunstraumarcade, Mödling, Lower Austria (2008), West Space (2008) and Beam Contemporary (2011, 2012). After completing a Masters of Fine Art at RMIT in 2007 Fairman was awarded the AIR-Krems, Kunstmeile Krems, Austria in 2008 and the Rondo Studios Artist-In-Residence, Kultur Service Steiermark, Graz, Austria, in 2009.

All enquiries, please contact Simone Hine, Kyle Weise or Fiona Boyd

simone@beamcontemporary.com.au | 0423 100 755

kyle@beamcontemporary.com.au | 0408 311 978

fiona@beamcontemporary.com.au | 03 9670 4443



level 1, 30 guildford lane melbourne victoria 3000 australia
wednesday to saturday 12 – 6

info@beamcontemporary.com.au | www.beamcontemporary.com.au | +61 3 9670 4443