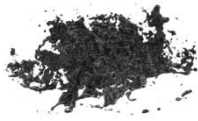


1 August – 1 September 2012

## Main Gallery (clockwise from left)



Simon Finn  
Liquid Mutation Two, 2012  
Charcoal on Paper  
90 x 65 cm  
(75 x 50 cm unframed)



Simon Finn  
Static Three, 2012  
Synthetic Polymer  
23 x 23.5 x 23.5 cm  
Edition of 3



Simon Finn  
Liquid Mutation One, 2012  
Charcoal on Paper  
90 x 65 cm  
(75 x 50 cm unframed)



Simon Finn  
Static One, 2012  
Synthetic Polymer  
23 x 23.5 x 23.5 cm  
Edition of 3



Simon Finn  
Liquid Surge, 2012  
Charcoal on Paper  
168 x 103 cm  
(150 x 85 cm unframed)



Simon Finn  
Static Two, 2012  
Synthetic Polymer  
23 x 23.5 x 23.5 cm  
Edition of 3  
Available: Editions 2/3 and 3/3

## Alcove



Simon Finn  
Surge Sequence, 2012  
Duration: 1minute 25seconds  
Format: High definition 1080P File.  
Edition of 3 +1AP

1 August - 1 September 2012

Simon Finn's new body of complex works are fragments of a simulated tsunami event; a *Synthetic Surge*. These works continue Finn's studio-based research into drawing and its connection to digital technologies. Finn uses the sequential images produced by these technologies as preliminary sketches which he extrapolates into a variety of mediums in order to explore spatial and temporal imagery. *Synthetic Surge* is a collection of meticulous charcoal drawings, digital animation and optical sculptures that reveal the water element of the tsunami event: the devastating virtual force behind the destruction represented in previous works by Finn, such as *Pier Collapse Stage 1* (2011). Here, a *Synthetic Surge* pushes its way through Finn's process of image construction combining two opposing aspects, detailed systematic assemblage and the concept of destruction. This simultaneous motioning towards assemblage and destruction allows Finn to question notions of temporal sequence and spatial simulation.



**Simon Finn** is currently undertaking his Master of Fine Arts by research at the Victorian College of the Arts and has held a number of solo exhibitions at spaces such as Platform; Blindsight; C3 Contemporary Art Space; and Canberra Contemporary Art Space. In 2011, Finn was a finalist in the *Dobell Prize for Drawing* at the Art Gallery of New South Wales and has been involved in group exhibitions at the Bendigo Art Gallery; Banyule Art Space

and the Australian Centre for the Moving Image. Simon was recently announced as the winner of the Arkley Prize as a part of the NotFair Art Fair 2012.

Image Detail (above): Simon Finn, *Pier Collapse Stage 1*, 2011, charcoal on paper.

All enquiries, please contact Simone Hine, Kyle Weise or Britt Salt

[simone@beamcontemporary.com.au](mailto:simone@beamcontemporary.com.au) | 0423 100 755

[kyle@beamcontemporary.com.au](mailto:kyle@beamcontemporary.com.au) | 0408 311 978

[britt@beamcontemporary.com.au](mailto:britt@beamcontemporary.com.au) | 03 9670 4443



level 1, 30 guildford lane melbourne victoria 3000 australia  
wednesday to saturday 12 – 6

[info@beamcontemporary.com.au](mailto:info@beamcontemporary.com.au) | [www.beamcontemporary.com.au](http://www.beamcontemporary.com.au) | +61 3 9670 4443